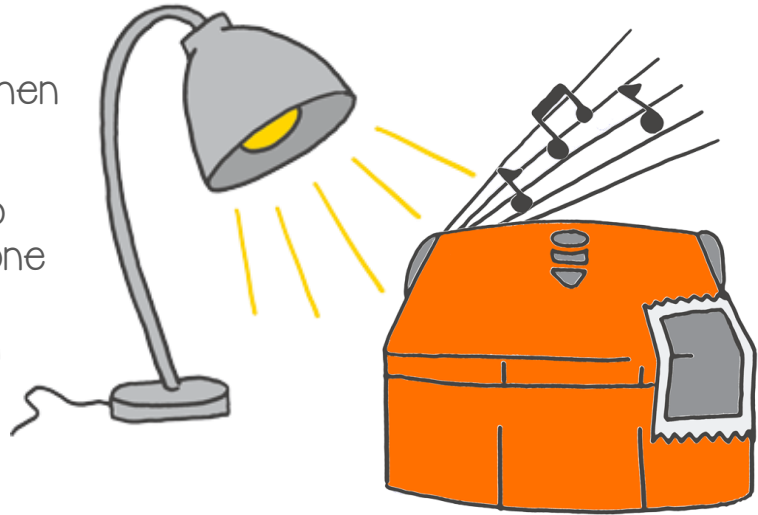


# Let's perform

Remember Edison's light sensors? These sensors let Edison detect light. We can use these sensors and make a program for Edison using EdBlocks.

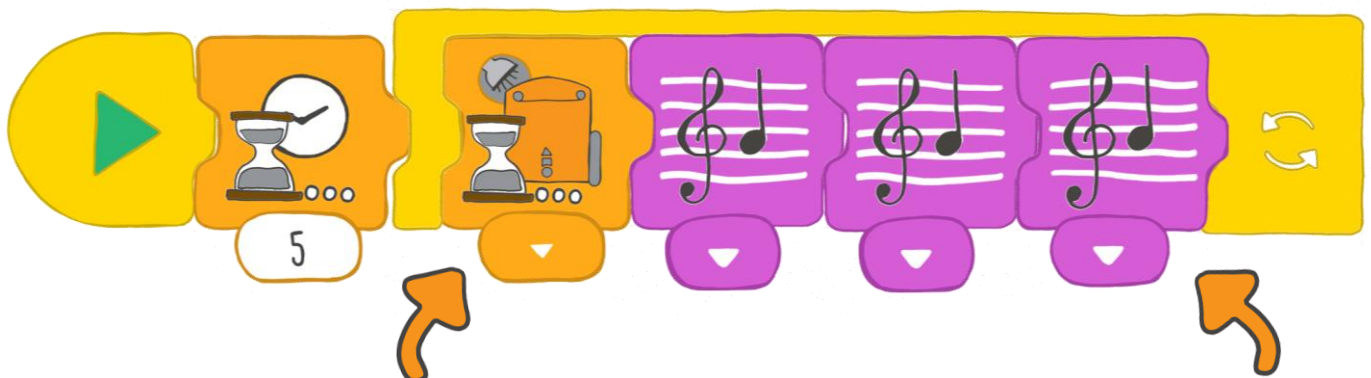
Let's make a program that gets Edison to play music when a light is detected.

This time, we want Edison to detect the light from only one side. We need to cover the opposite side of Edison with dark tape or cardboard.



## What to do with EdBlocks

Using the EdBlocks app, arrange the blocks into a program like the program below. Your program first needs to tell Edison to wait for five seconds. Then it should tell Edison to play a tune whenever it detects a light from one side.



Which side should Edison use to detect the light? You can choose!  
 If Edison is looking for light on the left side, the right side of your Edison robot needs to be covered.  
 If Edison is looking for light on the right side, the left side of your Edison robot needs to be covered.

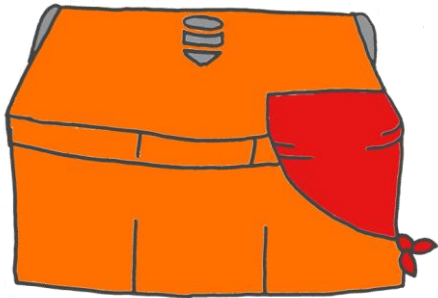
What music should Edison play?  
 You can use any tune you like. Find some sheet music and program a song. You can even make up your own tune!  
 Make sure both the 'wait for light' block and music blocks are inside the loop.

## What to do with Edison

Let's dress up Edison for a performance in the spotlight!

Using cardboard or tape, block out the light from one side of Edison. Then make a costume for Edison. You could make a pirate or a princess. What else could you make?

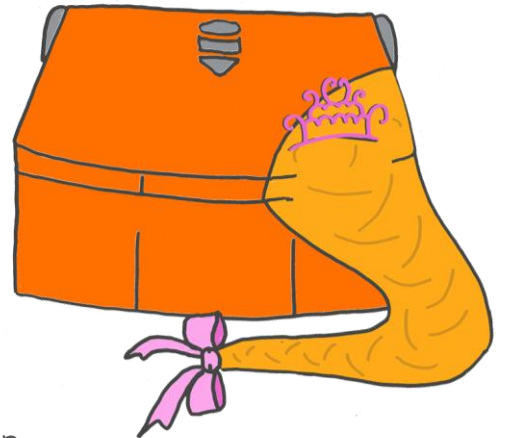
Use craft supplies and make your own character costume for Edison. Remember that your costume needs to cover one side of Edison, but leave the buttons uncovered.



A pirate with a patch?

A princess with long hair?

How do you want to dress up Edison?



## What about light?

Once you have dressed Edison, downloaded your program to Edison. Press the play (triangle) button, then put Edison in a drawer. When you open the drawer, Edison will detect the light and play your song.

Where is another dark place you can put Edison? You can try a backpack or a lunch box.



## Find the answer

What was your costume? Write the costume's name, then draw your costume below.

